

What's On

Your essential guide to the coming week's entertainment and leisure

Friday, February 16, 2007

Inside



Touch of glamour:
Rouge is decked out
Music - Page 13

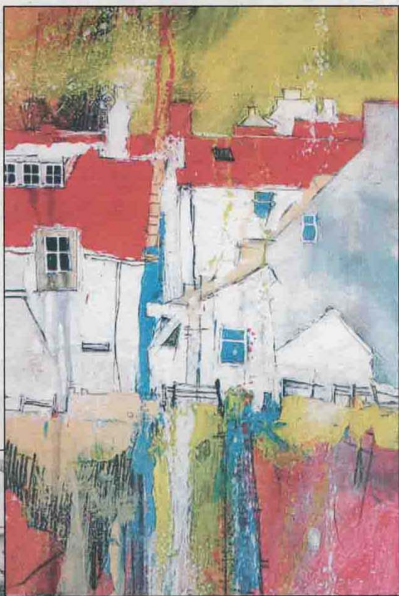


Managing laughter:
Salthum goes Doolally
Theatre - Page 15



Your quick-five guide
to the week ahead
Page 20

Lobster pots to paint pots...



Keith Newton reports:

RUGGED and wind-battered **STAITHES** has been attracting the crowds for centuries... they come to this strange little spot stuck between two cliffs, a beck, a harbour and a beach to be blasted breathless by the blow and the climb back to reality at the top of the hill.

Fishermen, sailors, smugglers, artists, walkers and photographers have all enjoyed its unique, unreal atmosphere. Today we take a trip to the seaside spot to find out just what it has to offer and joined the thronging winter crowds on a family day out.

■ Turn to pages two and three to discover more.

PLUS there are now also plenty of paintings on show as Staithes has an excellent art gallery. Based in the High Street, you cannot miss it - it's directly in front as you reach the bottom of the hill. Today we take a closer look at what the gallery has to offer and its latest exhibition, which features the work of Robert Shaw.

■ Turn to page five for the full story.